

# User Guide

## AC Triac Rotary Panel Dimmer

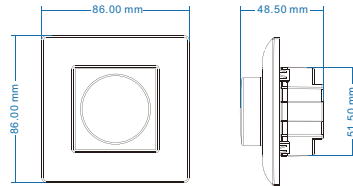
### Summary

- Rotary panel AC phase-cut dimmer, can also be used as dimming RF remote.
- To dim and switch single color dimmable LED lamps, traditional incandescent and halogen lights.
- Rotate knob to change brightness, support push and long push operation.
- Smooth dimming and switch without any flickering.
- Leading edge dimming or trailing edge dimming set by dip switch.
- Great compatibility with a variety of dimming RF remote.
- Adopt 2.4GHz wireless technology, remote distance up to 30m, one dimmer can accept up to 10 remote control.
- Work with WiFi-relay controller after install APP on IOS and Android system.

### Technical parameter

- Input voltage: AC100-240V
- Output voltage: AC100-240V
- Output current: Max 1A
- Remote distance: 30m
- Work temperature: -30°C~55°C
- Product size: L86×W86×H48.5mm

### Dimension



### Match guide

#### AC triac rotary panel dimmer match with RF remote (Optional)

1. Match: Turn on light, turn off, immediately push the knob for 5s, within 5s, press on/off key or zone key of the RF remote.
2. Delete: Turn on light, turn off, immediately push the knob for 10s, delete all matched RF remote.
3. Multiple zone RF remote only use zone key to match each zone receiver.

#### AC triac rotary panel dimmer work as RF remote

##### Match with controller(with match key)

1. Match: Short press match key, within 5s, push the knob.
2. Delete: Long press match key for 5s, delete all matched remote.

##### Match with controller(without match key), dimming driver or smart lamp

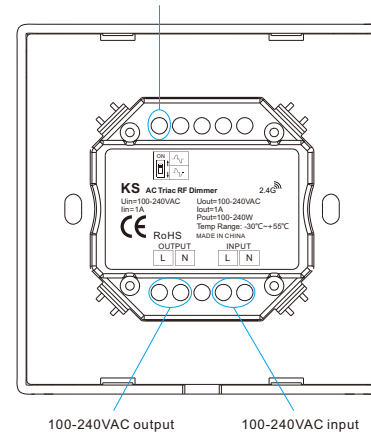
1. Match: Switch off the power, then switch on power again, short press the knob 3 times quickly within 5s after power on, the link is done once the light blinks 3 times.
2. Delete: Switch off the power, then switch on power again, short press the knob 5 times quickly within 5s after power on, the unlink is done once the light blinks 5 times.

### Knob function

- **Push:** Turn on or off light.  
After turn on light:
- **Rotate:** Rotate knob to adjust brightness, 2.5 turns, 50 levels.
- **Long push(1-5s):** Continuous 256 levels brightness adjustment.

### Interface specification

Leading edge or trailing edge phase-cut select



Select leading edge(forward-phase) dimmer or trailing edge(reverse-phase) dimmer according to dimmable LED light or driver.



Forward-phase control dimmer(TRIAC)



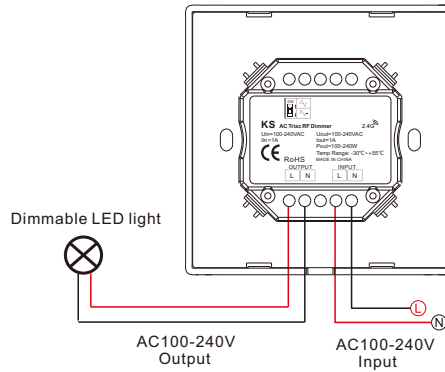
Reverse-phase control dimmer



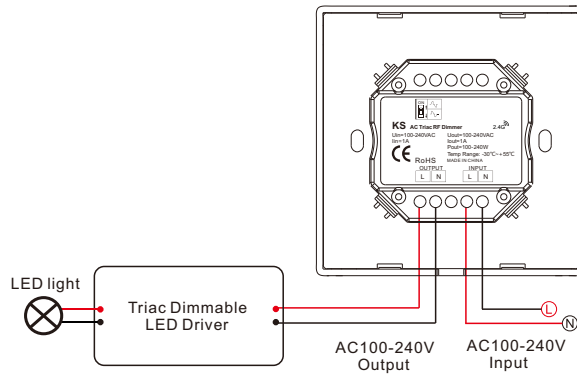
**Caution: before power on, you must confirm the selection of dip switch.**

## Wiring diagram

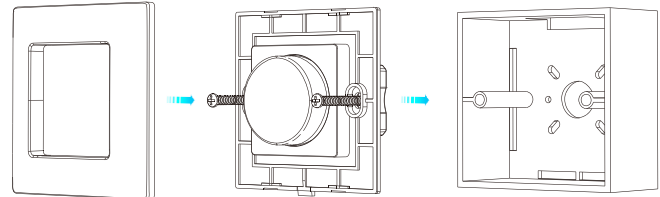
- KS connect with dimmable LED light



- KS connect with dimmable LED driver



## Installation diagram



## Malfunctions analysis & troubleshooting

Malfunctions	Causes	Troubleshooting
No light	<ol style="list-style-type: none"> <li>1. No power.</li> <li>2. Wrong connection or insecure.</li> </ol>	<ol style="list-style-type: none"> <li>1. Check the power.</li> <li>2. Check the connection.</li> </ol>
No response from the remote	<ol style="list-style-type: none"> <li>1. The battery has no power.</li> <li>2. Beyond controllable distance.</li> <li>3. The controller did not match the remote.</li> </ol>	<ol style="list-style-type: none"> <li>1. Replace battery.</li> <li>2. Reduce remote distance.</li> <li>3. Re-match the remote.</li> </ol>

## Safety information

1. The product shall be installed and serviced by a qualified person.
2. The product is non-waterproof. Please avoid the sun and rain.
3. Good heat dissipation will prolong the working life of the controller, Please ensure good ventilation.
4. Please check if the output voltage of any power supplies used comply with the working voltage of the product.
5. Ensure all wire connections and polarities are correct and secure before applying power to avoid any damages to the LED lights.
6. If a fault occurs please return the product to your supplier. Do not attempt to fix this product by yourself.